

Software upgrade 2.0

Get more from your EQUINOX.

At Minelab, we get your passion. And like you, we never leave any stone unturned. It's that same grit and determination that drives us to make every product and every innovation just that much better.

What's new?

Difficult ferrous targets — the common enemy for all detectorists. That is until EQUINOX. Download our EQUINOX update to make those pesky bottle caps, rusty nails and other falsing targets a thing of the past. Fire up the Minelab Update Utility and you're on your way. It's simple. You'll experience the enhanced Iron Bias feature, improved EQUINOX 600 backlight and much more.

Improved Iron Bias

Iron Bias has been enhanced with the addition of a new Iron Bias settings profile. The original EQUINOX Iron Bias 'FE' settings will still be available, but there is now the option to switch to the new Iron Bias 'F2' settings. This has an improved capability to reject a much wider range of difficult iron targets, including bottle caps.

EQUINOX 600 Backlight Brightness

The EQUINOX 600 now has the ability to adjust the backlight brightness to an additional 'Low' setting that matches the minimum setting on the EQUINOX 800. This 'Low' brightness is ideal for detecting at night and in low light conditions.



Minelab Update Utility (MUU) Details:

Minimum System requirements:

USB 2.0 port
EQUINOX USB Charging Cable with Magnetic Connector

Windows 10

50 MB of hard drive space
20 MB of RAM

MAC OS

Greater than 10.13 High Sierra
50 MB of hard drive space
30 MB of RAM

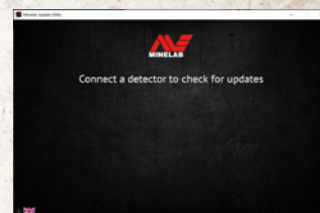
Note:

- Only one EQUINOX can be connected to the computer during an update operation.
- The EQUINOX must be ON during the software update.
- Any custom detector settings will be preserved while performing the update.
- An internet connection is required to download the Minelab Update Utility to the computer; however, an internet connection is not required to update the EQUINOX and this can be done offline.
- The EQUINOX coil must be connected to perform the update.

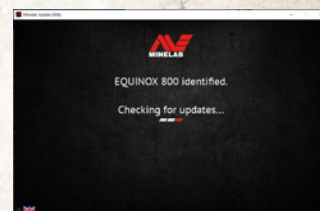
Important: Do not turn off or disconnect the EQUINOX during the update process.

Once the MUU is downloaded, open the application and follow these instructions:

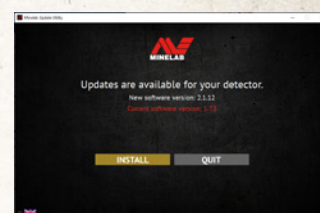
- 1 Connect the EQUINOX to the computer USB port using the magnetic charging cable and turn on the detector.



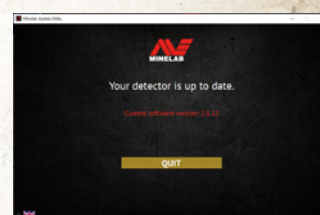
- 2 When the EQUINOX is identified, the MUU will communicate with the detector and determine the current software version.



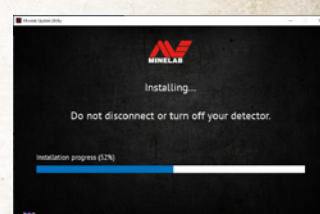
- 3 If an update is available, the MUU will display *Updates are available for your detector.* Click INSTALL to begin the upgrade or QUIT to close the MUU.



- 4 If the metal detector is up to date, the application will display *Your detector is up to date* and prompt you to QUIT the application.

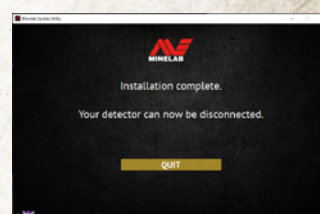


- 5 The EQUINOX screen will go blank during the update; a green LED on the top left corner of the control box will blink rapidly while the update is in progress.



- 6 Installation will take approximately one minute.

Once the upgrade is complete, the EQUINOX will restart and the MUU will prompt you to disconnect the detector and QUIT the application.



Note: Close the application and reopen if updating multiple EQUINOX detectors.

Download the
MINELAB Update Utility at
minelab.com/equinox-software-update-2-0



PERFORMANCE // IS EVERYTHING

Screen shots are for illustration purposes only. Actual screens may vary slightly from those shown. | 4907-1016-2

Minelab Electronics Pty. Ltd.
Australia & Asia Pacific

+61 8 8238 0888
minelab@minelab.com.au

Minelab Americas Inc.
North, South & Central America

+1 630 401 8150
minelab@minelab.com

Minelab International Ltd.
Europe & Russia

+353 21 423 2352
minelab@minelab.ie

Minelab MEA General Trading LLC
Middle East & Africa

+971 4 254 9995
minelab@minelab.ae

Minelab Do Brasil
Brazil

+55 47 3406 3898
minelabdobrasil@minelab.com